

ALASKA SEA ADVENTURES



Volume 03-1

Aboard the M/V "Alaska Adventurer"

Winter/Spring 2003

Another winter has nearly passed as we look with eager anticipation to the arrival of spring and the annual heralded events that unfold every summer among the majestic islands of the Alexander Archipelago that form Alaska's Inside Passage. Southeast Alaska is a very special, unique land with seasonal splendors that seem magical and never cease to amaze the most seasoned travelers to this mystical realm. Bears awaken from a winter's slumber with the prospects of a spring and summer resplendent with a rich bounty of meadow grasses, tubers, berries and streams choked with salmon. Whales return from a winter long fast in Hawaiian waters for a summer of gorging in the plankton and herring rich waters of the protected island passes. The amazing spectacle of tens of millions of salmon returning to their streams and rivers of origin to complete an important cycle of life that the region depends and sustains itself upon. And



M/V Alaska Adventurer in Tracy Arm, Sawyer Glacier (photo by D. Rogers)

so it is that come summer the stage will be set with these and other natural wonders within a land blessed with the scenic splendor of islands,

bays, fjords, glaciers, diversified wildlife and a rich culture of native seafaring heritage.

Continued on page 2



Amex commercial film crew, Tracy Arm (photo by D. Rogers)

Alaska Adventurer Stars in American Express Commercial

Some of you may have already noticed the Alaska Adventurer in the American Express TV commercial with Jerry Seinfeld. One of the many surprises for Alaska Sea Adventures last summer was the selection of the Alaska Adventurer by television commercial directors for the vessel to appear in the American Express commercial. A beautiful day in scenic Tracy Arm in front of S. Sawyer glacier made for an interesting assignment for all of us, AA crew as well as film crew. An amazing total of 27,000 ft of film was used in the one-day shoot which was made challenging by the near constant calving of the glacier. The resulting roar and tidal waves kept the bay, boat, and cameras in constant motion. We ended up staging the film crew with their cameras on the cliff where stability was a little more conducive for filming. What a spectacle for all of us.

Trip Notes

It would take more room than we have here to adequately recap events from all of our trips, but a few notes from some excursions follow. Fly fishing trips by way of "mother ship" are a very unique chance to experience remote location streams coupled with all of the other benefits of being vessel based. Crab, shrimp and various saltwater fishing choices put the icing on the cake just when you think the day is finished after working the waters of a particular stream. Rich Culver is a master of instructing beginners or guiding the most seasoned of fly anglers especially when accessing his favorite elements from a "mother ship" based adventure.

Our photography adventures with Beth Davidow present the potential for superb cruises as Beth has a great knowledge of an area's natural history as well as a keen eye for photographic opportunities both flora and fauna. Her pleasant personality suits her for the personal interaction of guiding a small group expedition. Beth has a dedicated following of fans that fill her trips quickly.

When it comes to whales, we **know** where the action is as we

Introduction - continued from page 1

Join us in the thrill of adventure as we head out on the Alaska Adventurer to follow the progression of events as they unfold as they have for millenniums. We have a number of guided excursions with a specific focus as well as our primary objective - to have FUN. Trips that are planned for the summer of '03 include: spring and fall guided fly fishing with Rich Culver; June, July, and August photography expeditions with Beth Davidow; July "Focus on Whales" adventure with Jim Nahmens, and in August, our third annual fantastic natural history "Expedition to Coronation Island" with Jack Eddy. Of course we do have a summer of private charter cruises planned with families and groups. There are still a couple of trips open for a custom charter. We would gladly work with your group to plan an exciting adventure with an itinerary created just for you.



Up real close and personal with a humpback! (photo by D. Rogers)

demonstrated last year on our "Focus on Whales" excursion! It is hard to believe that there are better opportunities for whale observation and photography than we experienced last summer with guide Jim Nahmens. The very unique cooperative bubble feeding never seemed to end, and at one point we were literally looking down the mouths of these magnificent animals while watching their carefully orchestrated demonstration of unified feeding. It is going to be exciting to see what this summer's trip holds in store for us!

The diversity of our summer trips hits a crescendo when we make our journey to remote Coronation Island with a stop at the panoramic El Capitan Caves on Prince of Wales Island. Naturalist and instructor Jack Eddy has an unsurpassed passion for exploring that is with a dedication to digging ever deeper to discover all that there is to learn from a given location. And there are numerous locals visited for everything from beachcombing to cave exploration on this expedition. One of Jack's favorite activities is taking one or two guests at a time up a stream to watch the bears feeding on salmon. Now that's something to witness up close and personal, a photographic haven of gorging bears!

Ah yes, and then there *is* fishing, the whole gamut from a simple stop to pick up fresh oysters from Tom at his shellfish farm to fighting the monstrous 200+ lb halibut. Marty even set a world record catching a very nice sized yellow eye rockfish on

fly! Crab wrangling? You would have to try it to believe it. Those that have know very well what it's all about, and we can't seem to find enough time to do it. When mid August rolls around the silver salmon begin to show up and the fun begins like you have never seen. Absolute non-stop *catching*. Yes, wear your arm out *catching*, not just fishing! It's another place where we **know** where the action is!

There is a lot more information about our trips. Visit our web site or give us a call today.



El Capitan cave explorers 2002 (photo by D. Rogers)

Fly Fishing By Mother Ship

By Rich Culver

Wisps of fog cling to spruce and hemlock like strands of cotton candy as a gentle yet steady rain dimples the glassy water of Pybus Bay. For the past five days the skies around Admiralty Island National Monument have been quiet—void of any floatplane traffic—due to dense clouds the colors of gun smoke and heavy fog suspended only inches above the placid water. Weather conditions like these are common to the island-chain waters of Southeast Alaska and are notorious for grounding both commercial jets and charter flights without warning. However, for the past six days my group and I have navigated the scenic waters of Admiralty Island—leisurely stopping along the way to ply remote estuaries and rivers with fly rods—without the worries of Southeast weather conditions or grounded charter flights. For on this fishing trip, we were living and traveling in comfort aboard a 60-foot mother ship.

The wilderness islands of Southeast Alaska are known for their natural beauty, spectacular glacial spires that tumble to the sea and an abundance of wildlife. What the region is not known for is a surplus of fishing lodges that offer reliable fly-out fishing opportunities. In Southeast Alaska it is the weather and precipitous terrain that not only dictates how one travels but also and probably more importantly, if and when one gets to travel. Although the floatplane is widely recognized (and accepted) as the universal method of Alaskan transportation particularly in the bush, such means of transportation might not always be the viable choice for fishing trips



*Fresh red snapper for dinner!
(photo by Romayne Mertens)*

especially here in Southeast. Once again, our natural features dictate our methods of transportation and these features also offer a brilliant solution. The vast networks of protected waterways, straits and sounds that comprise the Inside Passage of Southeast Alaska are natural arteries for transportation by boat. They offer a scenic corridor to the countless estuaries and secluded bays that can be safely and more reliably navigated (by boats) during times when transportation by fixed-wing aircraft might otherwise be unsafe, limited or highly unpredictable.

For the past ten years I've explored Southeast Alaska by mother ship. I've led trips in search of elusive steelhead; chased salmon of all species; hosted natural history and family fishing trips; and engaged in exploratory ventures to remote estuaries along the Outer Coast, all aboard mother ships. A mother ship can be viewed as a "traveling base lodge". The key

feature here is that mother ships are entirely mobile and they have the ability to navigate our local waters in all but the worst of weather conditions. To combat rough seas, many mother ships are equipped with stabilizers. Stabilizers make rough water travel significantly smoother, and in extreme cases at least acceptable. In addition, a majority of the larger vessels are fully equipped with state-of-the-art electronics and navigational systems and are fully set up with all the major amenities that most five-star Alaskan fly-out lodges boast about. For example, they offer exquisite staterooms, full galleys and dining rooms, lounge areas, libraries and observation rooms specifically designed for wildlife viewing. Some boats even go a step further and offer elaborate exercise rooms with treadmills and rowing machines; laundry rooms with dryers and areas for formal evening entertainment and dining. All together, these features make mother ships an ideal way to see and enjoy the countless natural wonders found here in Southeast Alaska without the added worries associated with poor weather and/or grounded fly-outs.

During a mother ship trip, access to the daily fishing locations takes place via small outboard skiffs. The skiffs are used primarily as a transport vessel; for drop-offs and pick-ups and are not used as principal fishing vessels. Instead, they are simply used

Continued on page 4



"Bubble net feeding" Humpback whales (photo by D. Rogers)



*Nice catch of Silver Salmon
(photo by C. DeKay)*

Fly Fishing - continued from page 3

for shuttling anglers from the mother ship to the various beaches of interest and back. With this approach, the worries associated with our local tides and where to anchor skiffs safely while fishing is no longer an issue or concern. I enjoy and prefer this approach for a number of reasons. First, fly-fishing in estuaries for fresh salmon offers relentless excitement. The fish are more apt to grab flies; they're always hotter once hooked and highly acrobatic; and if your goal is to seek out a "dinner fish" the closer

to the salt, the better on the plate! Second, the mother ship is always close by and just a radio call away for a quick pick up. Because of this feature, anglers can easily return to the boat for a hot lunch or snack without the hassles or environmental effects of having streamside "hot lunches" or those cooked over a fire. And lastly, if anyone in the group gets tired or wet and cold, they can easily be escorted back to the ship while the others can still enjoy their day at the stream.

Southeast Alaska is a fly fisher's paradise. A brilliant tapestry of



*Majestic Steller sealion bull
(photo by D. Rogers)*



Whale tail from sea kayak (photo by D. Rogers)

trackless land and cerulean water studded with misty islands. The region is filled with remote estuaries and river systems embraced by towering peaks and glacially carved mountain spires. But it is also a coastal temperate rain forest, with pronounced rains and formidable weather. Weather that has given the island's their unique character and history. Weather that feeds its lush forests, cascading waterfalls and crystalline rivers and creeks. But this weather can also ground air traffic for days and sometimes for weeks. Fortunately this land of islands offers a unique way to see and enjoy the countless natural splendors and in particular, it's world class fly-fishing, and that's by mother ship.

Updates & Accolades

Our CD/ROM brochure has been updated and a free copy is available with your call or email. You will find new interesting information on the CD/ROM but even more details are available at our web site which has grown to over 150 pages thanks to the huge efforts of our wonderful web master Jeff Reynolds.

Carli Byers is the new voice that will greet you when you call our office. Carli is a longtime resident of Petersburg where she and commercial fishing husband Mike are raising a young family. Carli has previous experience with the travel industry and her cheerful personality is a welcome addition to our family of people behind the scenes at Alaska Sea Adventures that strive to make your dream of an Alaska adventure become a reality.

Capt. Ryan Teasley joins Alaska Sea Adventures as mate and coordinator of deck operations. Capt. Ryan has been attending classes at University of Alaska Fairbanks where is studying Natural Resource Management along with English and Native American History. He holds a 100 ton U.S. Coast Guard Masters license and has previous charter vessel experience throughout a variety of locations in Alaska. As an avid outdoorsman, kayaker and fisherman, Ryan will compliment our journeys very well and is enthusiastic to assist our guests fulfill their adventure expectations aboard the Alaska Adventurer.



ASA's home port of Petersburg from the air (photo courtesy of NOAA)

M/V "Alaska Adventurer"

2003

PER PERSON DOUBLE OCCUPANCY SCHEDULED DEPARTURES

	DATES	D/N	PRIMARY EVENTS & ROUTE	ADV	EXP (2)	SUITE
1	4/21-4/27	7/6	Guided *Steelhead Flyfishing* w/ Rich Culver	Please call or email for pricing. Limited to 6 persons		
2	4/29-5/5	7/6	Guided *Steelhead Flyfishing* w/ Rich Culver			
3	5/7-5/13	7/6	Guided *Steelhead Flyfishing* w/ Rich Culver			
4	5/20-		RESERVED- CUSTOM CHARTER			
5	-5/29	10/9	RESERVED- CUSTOM CHARTER			
6	5/31-6/7	8/7	Guided Photography * Glaciers/Bears/Seals* w/ Beth Davidow	\$3,126	\$3,360	\$3,684
7	6/9-6/15	7/6	AVAILABLE FOR CUSTOM CHARTER- King Salmon/Bears/Shrimp/Crab	\$2,965	\$3,185	\$3,495
8	6/17-6/24	8/7	RESERVED- CUSTOM CHARTER			
9	6/26-7/3	8/7	RESERVED- CUSTOM CHARTER			
10	7/6-7/13	8/7	OPEN ITINERARY –COUPLES Glaciers /Whales/Shrimp/Crab	RSV'D	\$3,560	RSV'D
11	7/15-7/22	8/7	Guided Whales *FOCUS on WHALES* w/ Jim Nahmens	RSV'D	\$3,760	RSV'D
12	7/24-7/30	7/6	Guided Photography * WHALES* w/ Beth Davidow	RSV'D	RSV'D	RSV'D
13	8/1-8/7	7/6	Guided Natural History *CORONATION ISLAND* w/ Jack Eddy	\$3,126	\$3,360	RSV'D
14	8/9-8/15	7/6	RESERVED- CUSTOM CHARTER			
15	8/17-8/24	8/7	AVAILABLE FOR CUSTOM CHARTER- Coho Salmon/Whales /Crab	\$3,310	\$3,560	\$3,903
16	8/26-9/1	7/6	RESERVED- CUSTOM CHARTER			
17	9/3-9/9	7/6	AVAILABLE FOR CUSTOM CHARTER-Super Silver Salmon Fishing	\$2,965	\$3,185	\$3,495
18	9/11-9/17	7/6	AVAILABLE FOR CUSTOM CHARTER-Super Silver Salmon Fishing	\$2,965	\$3,185	\$3,495
19	9/19-9/25	7/6	Guided *Silver Salmon Fishing* w/ Rich Culver	Please call or email for pricing		
20	9/27-10/3	7/6	Guided *Silver Salmon Fishing* w/ Rich Culver			

ADV=ADVENTURE CABIN: EXP=EXPLORER CABINS(2): SUITE=OWNER'S SUITE

PRIVATE GROUP & CUSTOM CHARTER RATES

(ANY OPEN TRIP ABOVE CAN BE MODIFIED TO CREATE YOUR PRIVATE CHARTER)

DURATION OF CRUISE	▼ GROUP OF SIX ▼	▼ GROUP OF 8 ▼
7 DAYS/6 NIGHTS	\$18,200	\$21,700
ADDITIONAL PERSONS	NA	\$1,400 per person
ADDITIONAL DAYS	\$2,600 per day	\$3,100 per day

RATES SUBJECT TO CHANGE WITHOUT NOTICE

M/V Alaska Adventurer is home based in Petersburg. Juneau and Sitka are optional ports of origin and destination.

Alaska Sea Adventures

PO BOX 542

PETERSBURG, ALASKA 99833

1-907-772-4700 • 1-888-772-8588 toll free

e-mail: info@yachtalaska.com

www.YachtAlaska.com

Your reservation is held for 10 calendar days pending receipt of your 25% deposit. The balance is due on the 60th day prior to departure. Reservations made within 60 days require full payment. Your payment will be refunded less a \$100 cancellation fee if cancelled 60 or more days prior to departure. Cancellation 59 days or less will receive the same refund only if your space is filled. You may cruise the same or following year on same value/length cruise subject to space and operations. A deposit reserves your space. Full payment confirmation protects your fare from any subsequent changes. In the unlikely event we cancel your cruise we will refund 100% of what you paid Alaska Sea Adventures. Direct and Agent Bookings: Alaska Sea Adventures is the central booking agent for the M/V "Alaska Adventurer". Double Occupancy Fares vary according to cabin selection. ADV = "Adventurer" cabin (1); EXP = "Explorer" cabins (2); SUITE = "Owner's" cabin (1).

Alaska Sea Adventures operates under
Special Use Permit from the USDA Forest Service, Tongass National Forest

M/V "Alaska Adventurer"

2004

PER PERSON DOUBLE OCCUPANCY SCHEDULED DEPARTURES

#	DATES	D/N	PRIMARY EVENTS & ROUTE	ADV	EXP (2)	SUITE
1	4/18-4/23	6/5	Guided *Steelhead Flyfishing*	Please call or email for pricing. Limited to 6 persons		
2	4/25-4/30	6/5	Guided - *Steelhead Flyfishing* or *Birding Adventure*			
3	5/2-5/7	6/5	Guided *Steelhead Flyfishing*			
4	5/9-5/14	6/5	Guided - *Steelhead Flyfishing* or *Birding Adventure*			
5	5/16-5/21	6/5	Guided *Steelhead Flyfishing*			
6	5/24-5/30	7/6	AVAILABLE FOR CUSTOM CHARTER- King Salmon/Bears/Shrimp/Crab	\$2,800 day /6 person		
7	6/1-6/18	8/7	AVAILABLE FOR CUSTOM CHARTER- King Salmon/Bears/Shrimp/Crab	\$2,800 day /6 person		
8	6/10-6/17	8/7	Guided *ARCHAEOLOGY ADVENTURE* Prince of Wales Island	\$3,494	\$3,760	\$4,119
9	6/19-6/25	7/6	Guided *NATURAL HISTORY/BIRDING ADVENTURE* Forrester Island	\$3,126	\$3,360	\$3,684
10	6/27-7/3	7/6	AVAILABLE FOR CUSTOM CHARTER Glaciers /Whales/Shrimp/Crab	\$2,965	\$3,185	\$3,495
11	7/7-7/13	7/6	AVAILABLE FOR CUSTOM CHARTER Great Whales/Shrimp/Crab	\$2,965	\$3,185	\$3,495
12	7/15-7/22	8/7	Guided Whales *FOCUS on WHALES* w/ Jim Nahmens	\$3,494	\$3,760	\$4,119
13	7/24-7/31	8/7	AVAILABLE FOR CUSTOM CHARTER- Coho Salmon/Whales/Explore/Crab	\$3,310	\$3,560	\$3,903
14	8/2-8/9	8/7	Guided Natural History *CORONATION ISLAND* w/ Jack Eddy	\$3,494	\$3,760	\$4,119
15	8/11-8/18	8/7	AVAILABLE FOR CUSTOM CHARTER- Coho Salmon/Whales/Explore/Crab	\$3,310	\$3,560	\$3,903
16	8/20-8/26	7/6	AVAILABLE FOR CUSTOM CHARTER- Coho Salmon/Whales/Explore/Crab	\$2,965	\$3,185	\$3,495
17	8/28-9/3	7/6	AVAILABLE FOR CUSTOM CHARTER-Spectacular Silver Salmon Fishing	\$2,965	\$3,185	\$3,495
18	9/5-9/11	7/6	AVAILABLE FOR CUSTOM CHARTER-Spectacular Silver Salmon Fishing	\$2,965	\$3,185	\$3,495
19	9/13-9/19	7/6	Guided *Silver Salmon Fishing*	Please call or email for pricing		
20	9/21-9/27	7/6	Guided *Silver Salmon Fishing*			

ADV=ADVENTURE CABIN: EXP=EXPLORER CABINS(2): SUITE=OWNER'S SUITE

PRIVATE GROUP & CUSTOM CHARTER RATES

(ANY OPEN TRIP ABOVE CAN BE MODIFIED TO CREATE YOUR PRIVATE CHARTER)

DURATION OF CRUISE	▼GROUP OF SIX▼	▼GROUP OF 8▼
7 DAYS/6 NIGHTS	\$19,500	\$23,000
ADDITIONAL PERSONS (over 12 yrs old)	NA	\$1,400 per person
ADDITIONAL DAYS	\$2,800 per day	\$3,300 per day

RATES SUBJECT TO CHANGE WITHOUT NOTICE

M/V Alaska Adventurer is home based in Petersburg. Juneau and Sitka are optional ports of origin and destination.

Alaska Sea Adventures

PO BOX 542

PETERSBURG, ALASKA 99833

1-907-772-4700 • 1-888-772-8588 toll free

e-mail: info@yachtalaska.com

www.YachtAlaska.com

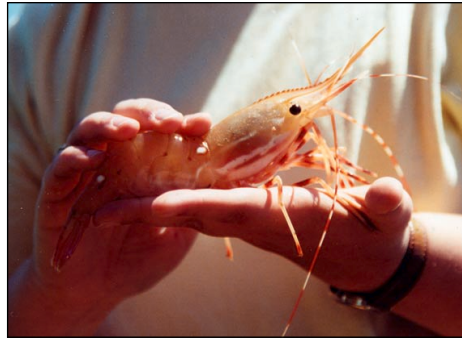
Your reservation is held for 10 calendar days pending receipt of your 25% deposit. The balance is due on the 60th day prior to departure. Reservations made within 60 days require full payment. Your payment will be refunded less a \$100 cancellation fee if cancelled 60 or more days prior to departure. Cancellation 59 days or less will receive the same refund only if your space is filled. You may cruise the same or following year on same value/length cruise subject to space and operations. A deposit reserves your space. Full payment confirmation protects your fare from any subsequent changes. In the unlikely event we cancel your cruise we will refund 100% of what you paid Alaska Sea Adventures. Direct and Agent Bookings: Alaska Sea Adventures is the central booking agent for the M/V "Alaska Adventurer". Double Occupancy Fares vary according to cabin selection. ADV = "Adventurer" cabin (1); EXP = "Explorer" cabins (2); SUITE = "Owner's" cabin (1).

Alaska Sea Adventures operates under
Special Use Permit from the USDA Forest Service, Tongass National Forest

Notes from Captain Dennis

There are times that each and every one of us must look around and take stock of our blessings. There are a number of reasons for me to feel very fortunate besides the fact that I get to live in such a remarkable place as southeast Alaska. Of foremost consideration for my thankfulness is the opportunity that I have had to spend time with fantastic people last summer. I very much appreciate that these folks first of all chose to cruise with us, and second that they were such fantastic company. I thoroughly enjoyed the occasion to meet and become associated with them during our adventures. The friendships that we formed are deeply held, and it is with great hope that we will be afforded the chance to spend some time together again.

In January we participated as an exhibitor in the International Sportsman's Exposition in Denver where we were able to meet many more people to whom I would like to say "hello" and welcome to our newsletter and Alaska Adventure family. I hope to greet many of you aboard the Alaska Adventurer in the



*Nice Spot shrimp
(photo by R. Mertens)*

future. This summer we have a very nice selection of guided trips available featuring a variety of interesting topics. Once again I feel fortunate to work with the wonderful guides who lead these exciting adventures. They are specialists in their respective fields and enjoy the chance to share their knowledge with our guests. Space on all of these trips is limited with some of them already full, so visit the web site and email or give us a call to reserve your place. We are already working on the 2004 schedule. If the dates that work for you are not available this summer, let us know what dates you would consider for next summer so that we can customize your calendar with ours.

Advanced booking assures your satisfaction.

With pleasure, I would like to introduce our new chef Jake Schas who has just returned to Oregon from his winter job as chef at McMurdo Station in Antarctica. It is actually summer in Antarctica during *our* winter. Jake is taking a breather in Oregon and is anticipating a bountiful summer working with lots of fresh Alaskan seafood and helping our guests enjoy their Inside Passage experience. The Alaska Adventurer will have a few new features this season. To assist our guests with their computer needs, we'll have a computer with CD-ROM burner to help store digital images. We will also have an underwater camera to observe the sub-surface marvels without getting wet!

Please remember to visit our web site www.YachtAlaska.com for trip details and updates. I very much look forward to seeing those of you returning this summer and to meeting those who will be cruising with us for the first time.

Capt. Dennis

*May the wind be at your back
wherever your summer travel takes you!*

Availability for 2003

Winter is winding down and spring is only a couple more Northerlies away so we hope that your plans for summer travel are under way and include a voyage on the Alaska Adventurer with us. At the time this newsletter goes to press, we will have openings available for the following dates and trips.

- Late April/early May: guided steelhead fly fishing trips are available. Call for details.
- Trip # 4/5 May 20th – 29th: 1 cabin available; 3 couples from Australia would like one additional couple to join them on this 10-day exclusive cruise.
- Trip #6 May 31st – June 7th: 8 day guided photography adventure, 3 cabins available. Beth Davidow is the photographer/guide for this special early summer cruise.
- Trip #7 June 9th – 15th: 7 days OPEN for custom charter!
- Trip #10 July 6th – 13th: 1 cabin available, 8-day open itinerary cruise.
- Trip #11 July 15th – 22nd: 2 cabins available for this exciting "Focus on Whales" adventure guided by naturalist/photographer Jim Nahmens.
- Trip # 13 August 1st – 7th: 3 cabins available. Jack Eddy will lead this spectacular third annual cruise expedition to Coronation Island.
- Trip # 15 August 17th – 24th: 8 days OPEN for custom charter!
- Trip #'s 17/18 Sept 3rd– 17th: OPEN for guided or unguided custom charter. This is PRIME silver salmon fishing season and we will guarantee the hottest silver salmon fishing in the world! Call us!
- Mid September and early October offer fantastic silver salmon fishing and our guided fly fishing trips are spectacular. Call for details.

As you can see space is limited and it only takes a telephone call to reserve your space on a real Alaska adventure to experience the spirit of Alaska on a very special, intimate journey with Alaska Sea Adventures.



Humpback whales bubble-net feeding up close (photo by D. Rogers)

*Join us
in the thrill
of
adventure!*

Download a full color
copy of this newsletter
at
www.YachtAlaska.com

Alaska Sea Adventures Newsletter

P.O. Box 542 • Petersburg, Alaska 99833 • Phone: 907-772-4700 • Toll Free: 888-772-8588 • Fax: 907-772-3127

FOR A FREE BROCHURE AND DETAILS ON ALASKA CALL, WRITE OR FAX TO THE ABOVE.

E-mail: info@yachtalaska.com www.YachtAlaska.com

MEMBERSHIP?

YOU ARE AUTOMATICALLY A MEMBER IF YOU'VE CRUISED WITH ASA. WANT YOUR FRIEND TO RECEIVE THIS NEWSLETTER? SEND NAMES AND ADDRESSES FOR BOTH OF YOU TO THE ABOVE ADDRESS. WE'LL SEND THEM A YEAR'S ISSUES FREE WITH YOUR COMPLIMENTS!



ALASKA SEA ADVENTURES

P.O. Box 542
Petersburg, Alaska 99833
www.YachtAlaska.com